

# GM9907-L5

## Bulk Scale Controller

(Continuous Weighing)



GM9907-L5 is designed for bulk scale to solve the problem of batch weight and automatic totalizing of incoming and outgoing material. it can be used widely used in chemical, grain, feeds. construction and harbor logistics industries etc.



### Version Features

#### User-Friendly · Better Experience

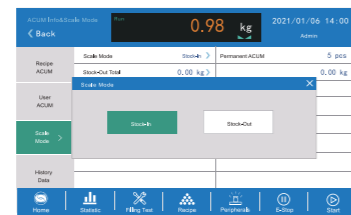
- Memory card build in, 7-inch touch screen for displaying clearly and operating easily;



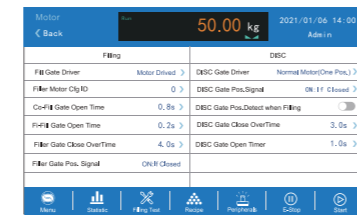
- Flow rate function can discharge material automatically and alarm when flow rate is low, which is more intelligent;



- Two scale mode: Stock-In or Stock-Out; Data information is more convenient to operate;



- Two packing mode: Motor or Pneumatic; Add/Discharge feed is more convenient;



### Communication

#### RS485+RS232

- For connecting PC, PLC, Printer, Label Printer, Remote Display, Code Printer, or other external devices, for reading and setup remotely;

#### USB

- For importing and exporting recipes, works, I/O function communication and other parameters, upgrading system software, customizing boot screen, etc;

#### 12 Input / 16 Output

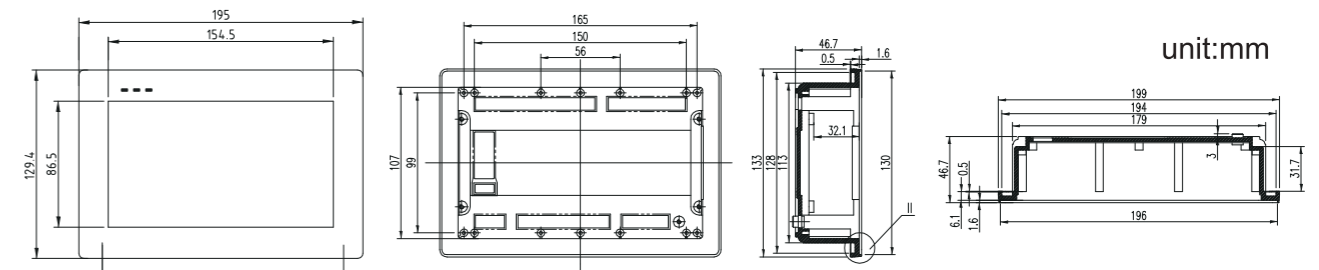
- For starting, stopping, feeding, unloading, clamping/loosening bags, etc;

#### Modbus TCP

- For connecting PC, PLC, Printers, etc., for reading remotely.

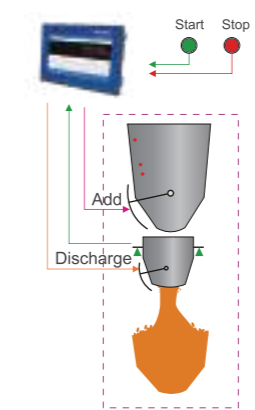
### Specifications

General Specifications	Model	GM9907-L5
	Power Supply	DC24V
	Operating Temperature	-10~40°C
	Maximum Humidity	90%R.H without dew
	Test Standard	ClassIII 6000 e, 1 μV/e
	Power Consume	About 15W
Weighing Parameters	A/D Converter type	24 bit Sigma-Delta
	A/D Conversion Rate	120/240/480/960 times /sec
	Non-Linear	0.01%F.S
	Gain Drifting	10PPM/°C
	Minimum Sensitivity	0.02μV/d
	Analog Input Range	0.02~15mV
	Display Accuracy	1/100,000
	Power Source for Load Cell	DC5V 125mA(MAX)
Input Resistance	10MΩ	
Zero Point Adjustment Range	0.002~15mV(load cell 3mV/V)	
I/O Interfaces and Communications	12 Input 16 Output, I/O Selectable	
	12 Input, Active-low	Start, Emergency stop, Stop, Zeroing, Clear alarm, Fill permission, Clogged, Manual fine flow, etc.
	16 Output, Single drive current 500mA	Run, Stopped, Clogged, Coarse flow, Fine flow, Result waiing, Over/under, Alarm, Stock-out Done, Last feed, Disc, -Nz-, etc



\*Specification and dimension may be upgraded, please consult sales manager for the latest info.

### Application



Continuous Weighing