

GM9907-L2/LD

Packing Controller

(L2:Simplex Packing LD:Duplex Packing)



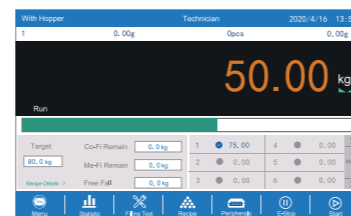
GM9907-L2/LD is the simplex/duplex packing controller , widely used for, granule packing scale, powder packing scale, big bag, valve type scale-cement, etc.



Version Features

User-Friendly · Better Experience

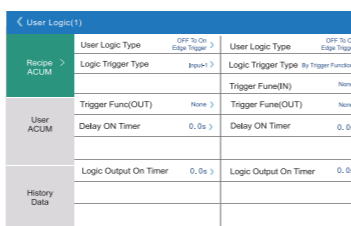
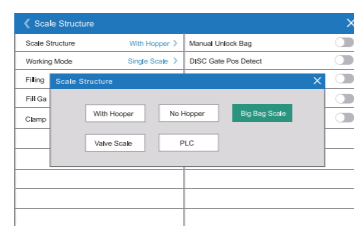
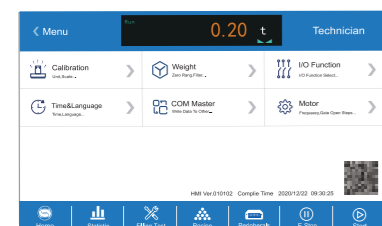
- Memory card build in, 7-inch touch screen for displaying clearly and operating easily, Single/double scale interface mode switching;



- **L2:** Simplex packing; **LD:** Duplex packing; can be choosed, interface displayed accordingly;

- Multi-Mode: With Hopper, No Hopper, Big Bag Scale,Valve Scale,PLC;

- Self-Adaptive: I/O Programmable;



Communication

RS485+RS232

- For connecting PC,PLC,Printer,Label Printer, Remote Display,Code Printer,or other external devices,for reading and setup remotely;

USB

- For importing and exporting recipes,works,I/O function communication and other parameters, upgrading system software,customizing boot screen,etc;

12 Input/16 Output

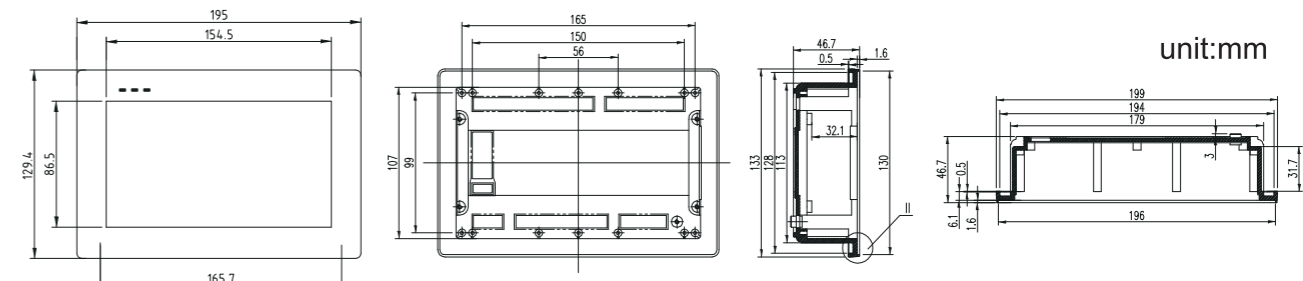
- For starting,stopping, feeding, unloading, clamping/loosening bags,etc;

Modbus TCP

- For connecting PC, PLC, Printers,etc., for reading remotely.

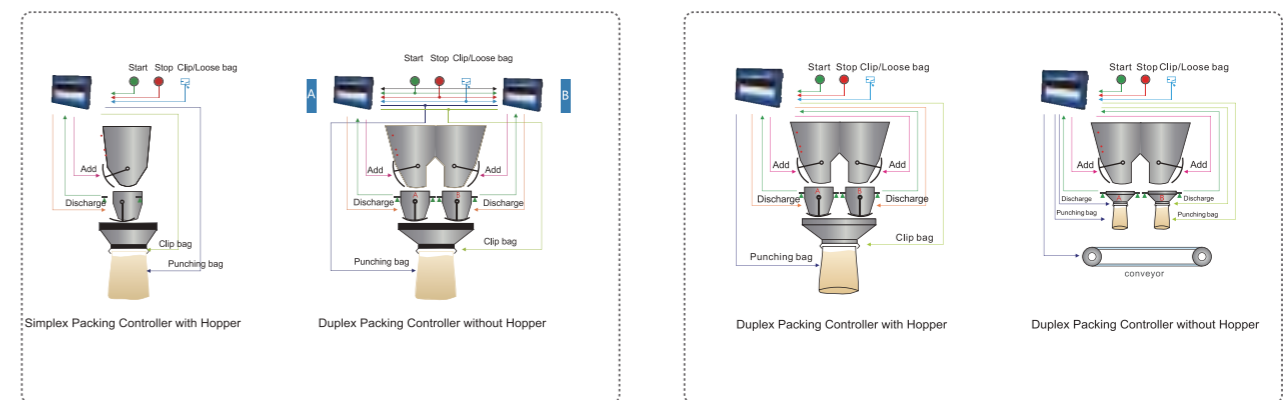
Specifications

General Specifications	Model	GM9907-L2/LD
	Power Supply	DC24V
	Operating Temperature	-10~40°C
	Maximum Humidity	90%R.H without dew
	Test Standard	ClassIII 6000 e, 1 μV/e
	Power Consume	About 15W
Weighing Parameters	A/D Converter type	24 bit Sigma-Delta
	A/D Conversion Rate	120/240/480/960 times /sec
	Non-Linear	0.01%F.S
	Gain Drifting	10PPM/°C
	Minimum Sensitivity	0.02μV/d
	Analog Input Range	0.02~15mV
	Display Accuracy	1/100,000
	Power Source for Load Cell	DC5V 125mA(MAX)
Input Resistance	10MΩ	
Zero Point Adjustment Range	0.002~15mV(load cell 3mV/V)	
I/O Interfaces and Communications	12 Input 16 Output, I/O Selectable	
	12 Input, Active-low	Start, Emergency stop, Stop, Zeroing, Clear alarm, Clear total ACUM, Bag Lock/Unlock, Manual discharge, Manual fine flow, Manual coarse flow, Change recipe, Empty material
	16 Output, Single drive current 500mA	Run, Stopped, Coarse flow, Medium flow, Fine fow, Bag lock, Result waiting, Ready, Discharge, -NZ-, Pat bag, FILL, EMPT, Alarm Batch complete Over/Under



*Specification and dimension may be upgraded, please consult sales manager for the latest info.

Application



GM9907-L2

GM9907-LD