

ZEMIC NEW COMPRESSION LOAD CELL FOR TRUCK SCALES

Independent Research & Development and market leading



中航电测
AVIC ZEMIC



上海耀华
YAOHUA SHANGHAI YAOHUA



CLASSIC DESIGN WITH ADVANCED SAFETY

- Compression type with high accuracy and long-term stability;
- All-in-one loading structure leads to good reset ability;
- Y type structure well solves the using problems of easy-fallen and easy-rotation for previous compression load cells.



PERFECT COMPATIBILITY AND EASY INSTALLATION

- Meet various installation requirements, which also match the scales structure strength and space limit of cup-ball load cells.;
- Convenient after-sale maintenance and easy replacement, which largely save the replacing cost.
- The load cell can be fixed with the platform as an integral during the transportation, which can be installed on site directly without re-orientation or center align.



STABILITY AND SAFETY PROTECTION OF RIGHTS AND INTERESTS

- Digital version takes our own designed high-accuracy weighing digital module, which has unique, high stability, strong anti-interference, to provide better protection for customers to ensure their operation and sales.



ANTI-FALLEN
ANTI-ROTATION
EASY INSTALLATION



		HM14H/H7/H8/H9 (Analog)	HM14C/C1/C2/C3 (Analog)
Maximum capacity(Emax)	t	30/40	30/40
Output sensitivity	mV/V	2±0.002	2±0.002
Accuracy class		C3	C3
Combined error	%FS	0.02	0.02
Repeatability	%FS	0.01	0.01
Creep error	%FS	±0.02	±0.02
Temperature effect on zero balance	%FS/10°C	±0.015	±0.015
Temperature effect on sensitivity	%FS/10°C	±0.011	±0.011
Zero balance	%FS	±1.0	±1.0
Input resistance	Ω	750±10	700±10
Output resistance	Ω	700±7	700±7
Insulation resistance	MΩ	≥5000 (50VDC)	≥5000 (50VDC)
Compensated temperature	°C	-10 to +40	-10 to +40
Operating temperature	°C	-35 to +65	-35 to +65
Excitation, recommended voltage	V	5 to 12DC	5 to 12DC
Excitation maximum	V	18DC	18DC
Safe overload	%FS	150	150
Ultimate overload	%FS	200	200
Element Material		Alloy steel	Alloy steel
Surface treatment		Nickel plated	Nickel plated
Ingress Protection		IP68	IP68
Weight without package	kg	8.4kg	8.4kg

ANTI-FALLEN
ANTI-ROTATION
EASY INSTALLATION



		DHM14H/H7/H8/H9 (Digital)	DHM14C/C1/C2/C3 (Digital)
Maximum capacity(Emax)		30, 40	30, 40
Accuracy class	t	C3	C3
Rated output	d	1000000±1000	1000000±1000
Creep error	%FS	±0.02	±0.02
Repeatability	%FS	±0.01	±0.01
Zero output	d	±400	±400
Temperature effect on zero balance	%FS/10°C	±0.015	±0.015
Temperature effect on sensitivity	%FS/10°C	±0.011	±0.011
Insulation resistance	MΩ	≥5000 (50VDC)	≥5000 (50VDC)
Communications interfaces		RS485 four-wire	RS485 four-wire
Compensated temperature	°C	-10 to +40	-10 to +40
Operating temperature	°C	-35 to +65	-35 to +65
Excitation, recommended voltage	V	6 to 15	6 to 15
Excitation maximum	V	18	18
Safe overload	%FS	120	120
Ultimate overload	%FS	150	150
Element Material		Alloy steel	Alloy steel
Surface treatment		Chemical nickel plated/ Electro nickel plated	Chemical nickel plated/ Electro nickel plated
Ingress Protection		IP68	IP68
Weight without package	kg	8.6kg	8.4kg



MULTIPLE PRODUCTS OPTIONS ARE AVAILABLE

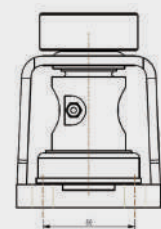
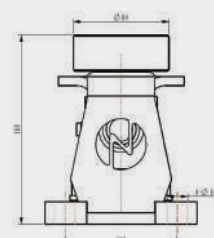
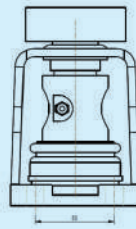
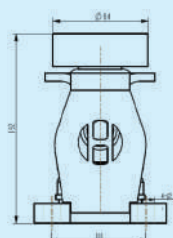
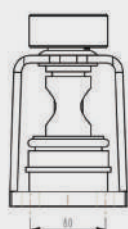
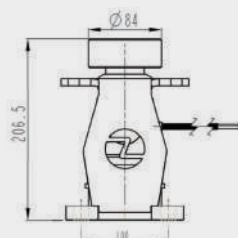
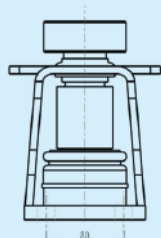
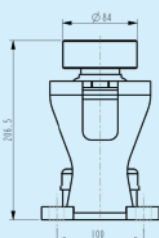


HM14C (Analog)
DHM14C (Digital)

HM14C1 (Analog)
DHM14C1 (Digital)

HM14C2 (Analog)
DHM14C2 (Digital)

HM14C3 (Analog)
DHM14C3 (Digital)



Standard

Z type

H type

N type(mini version)

High 206.5

High 206.5

High 192

High 168

Meet different scales' heights



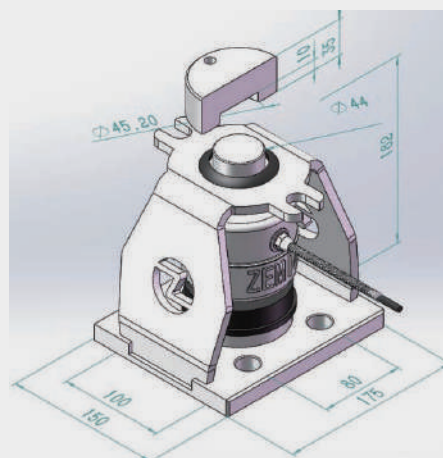
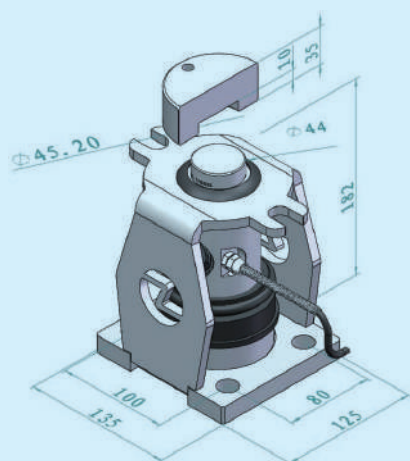


MULTIPLE PRODUCTS OPTIONS ARE AVAILABLE



HM14H (Analog)
DHM14H (Digital)

HM14H7 (Analog) | HM14H8 (Analog) | HM14H9 (Analog)
DHM14H7 (Digital) | DHM14H8 (Digital) | DHM14H9 (Digital)



Standard

Optional

Foundation size 135*125

Foundation size 175*150

	Anti-freezing cable	Double-shielded rat-proof cable	Dual aviation plug
HM14H (Analog) DHM14H (Digital)	○	○	○
HM14H7 (Analog) DHM14H7 (Digital)	○	○	○
HM14H8 (Analog) DHM14H8 (Digital)	●	○	○
HM14H9 (Analog) DHM14H9 (Digital)	●	●	●

New scales installation scene



Maintenance scene





AVIC ZEMIC



YAOHUA

Co-presented by ZEMIC and Yaohua

www.zemic.com.cn



Add: No. 166, West Avenue, Hi-Tech District, Xi'an, Shaanxi, China



Miranda



13572625426



xjliang@zemic.com.cn

