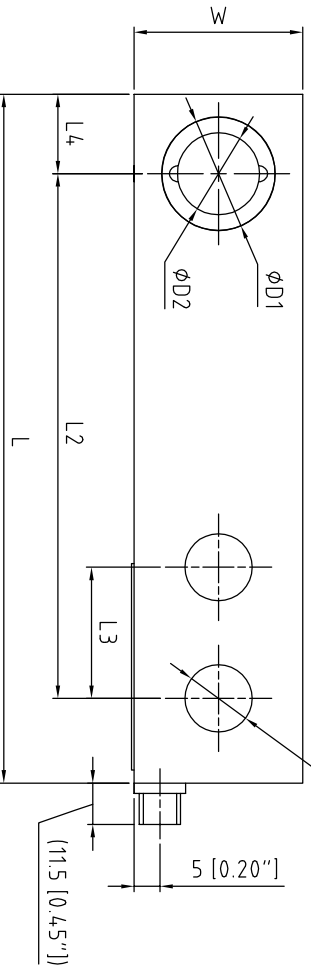
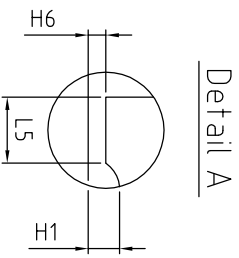
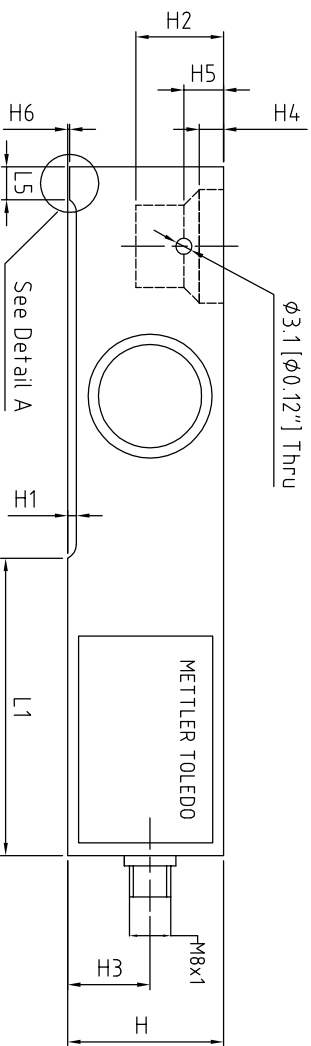
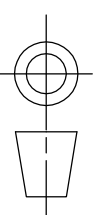


Capacity	Dimensions																
	D	D1	D2	H	H1	H2	H3	H4	H5	H6	L	L1	L2	L3	L4	L5	W
220-1100 kg [500-2500 lb]	13 [0.51]	22.2 [0.87]	15.9 [0.63]	30.2 [1.19]	1.7 [0.07]	17.3 [0.68]	16 [0.63]	4.7 [0.19]	7.9 [0.30]	0.38 [0.015]	134.4 [5.29]	57.7 [2.27]	101.6 [4.00]	25.4 [1.00]	16.4 [0.65]	6.4 [0.25]	32.7 [1.29]
2200 kg [5000 lb]	13 [0.51]	22.2 [0.87]	15.9 [0.63]	36.6 [1.44]	6 [0.24]	22.9 [1.31]	21.3 [0.84]	9.5 [0.37]	12.7 [0.50]	6 [0.236]	136.7 [5.38]	57.9 [2.28]	101.6 [4.00]	25.4 [1.00]	18.4 [0.72]	-	36.8 [1.45]
4400 kg [10000 lb]	19.3 [0.76]	34.9 [1.37]	22.2 [0.87]	42.9 [1.69]	2.3 [0.09]	29.3 [1.61]	22.7 [0.89]	11 [0.43]	17.8 [0.70]	2.3 [0.09]	171.5 [6.75]	73.8 [2.91]	133.3 [5.25]	38.1 [1.50]	21.5 [0.85]	-	42.9 [1.69]



SLB615D - 220, 550, 1100, 2200, 4400kg

Notes:
1. Dimensions are in mm[inches].

General Tolerance for Linear Dimension

Tolerance Level	Dimension Division							
	0.5~3	3~6	6~30	30~120	120~400	400~1000	1000~2000	2000~4000
m(Intermediate)	±0.1	±0.1	±0.2	±0.3	±0.5	±0.8	±1.2	±2

Assembly

METTLER TOLEDO
MTCN /MTC / MTCZ

General Dimension Layout SLB615D

FS Num.	S		A		N		1:1	
Material/DRN	検査/DRN	検査/DRN	検査/DRN	検査/DRN	検査/DRN	検査/DRN	検査/DRN	検査/DRN
Check/CHK	検査/CHK	検査/CHK	検査/CHK	検査/CHK	検査/CHK	検査/CHK	検査/CHK	検査/CHK
DATE	2012/08/25	2012/08/25	2012/08/25	2012/08/25	2012/08/25	2012/08/25	2012/08/25	2012/08/25

30051136A