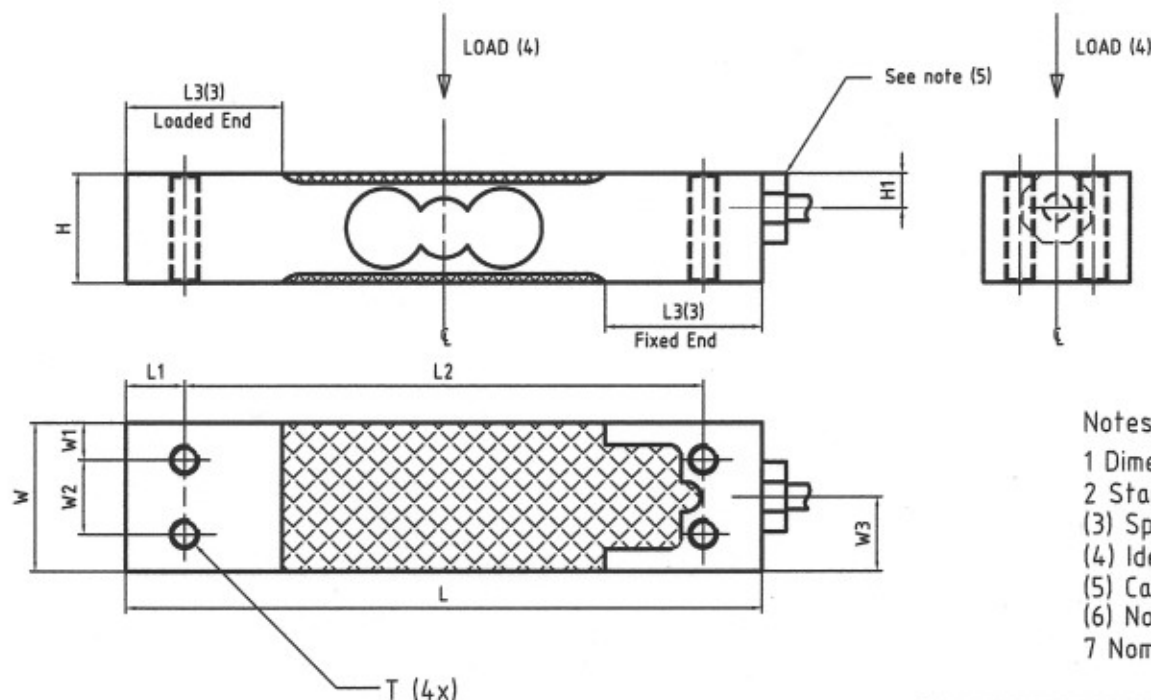


13 12 11 10 9 8 7 6 5 4 3 2 1

V89800ZZL

Model	Capacity	Dimensions And Locations											
		H	H1	L	L1	L2	L3(3)	T	W	W1	W2	W3	Deflection (6)
MT1022	3-7kg [6.6-15.4lb]	22 [0.87]	6 [0.24]	130 [5.12]	12 [0.47]	106 [4.17]	25 [0.98]	M6	25.4 [1.00]	5.2 [0.20]	15 [0.59]	12.7 [0.50]	0.3 [0.012]
	10-30kg [22-66.1lb]												
SSP1022	6-10kg [13-22lb]		7 [0.28]						0.25 [0.010]				
	30kg [66.1lb]												



Notes:

- 1 Dimensions are in mm [inches].
- 2 Standard cable length is 1m (3.3ft).
- (3) Spacer/mounting surface length.
- (4) Ideal loading & platter-center point on this axis.
- (5) Cable-entry fitting on SSP1022 only.
- (6) Nominal deflection at Rated Capacity (E_{max}).
- 7 Nominal cable diameter =5.0 [0.20].

Cable termination

+Exe: Green -Exe: Black
 +Sig: Red -Sig: White
 Shield: Yellow

				Assembly				METTLER TOLEDO	
								MTCN / MTCZ	
								MT/SSP1022 Gen.Dim.	
								72200868A	
设计/VER	审核/EREFOUND.	制图人/BY	日期/DATE	审核/STAGE	SP	数量/WGT	比例/SCALE		
设计/DRN	张英华	张英/APPD	张英	S	A	Y	1:1		
数量/CHECK	张英子	张英/AGEN							
工程/MFG	刘强	日期/DATE	2006-11-20	SHEET: 第 1 页 of 共 1 页					

13 12 11 10 9 8 7 6 5 4 3 2 1